



## 149 Christchurch Road

Ashford, TN23 7UY

Price £375,000

A stunning semi detached home along the popular Christchurch Road just a short walk from Victoria Park, Ashford Town Centre and mainline station.

This characterful home with high ceilings comprises an entrance hall, sitting room with wood burning stove, dining room, kitchen, bathroom, three bedrooms and en suite.

The generous rear garden has been lovingly tended to, well stocked with a wide range of flowers and shrubs all the while enjoying a southerly aspect.

- IMPRESSIVE SEMI DETACHED HOUSE
- CHARACTERFUL HIGH CEILINGS
- THREE BEDROOMS
- EN SUITE & FAMILY BATHROOM
- TWO RECEPTION ROOMS & WOOD BURNING STOVE
- STUNNING REAR GARDEN WITH SOUTHERLY ASPECT
- SHORT WALK TO VICTORIA PARK & MAINLINE STATION
- GAS CENTRAL HEATING & DOUBLE GLAZING
- TASTEFULLY DECORATED

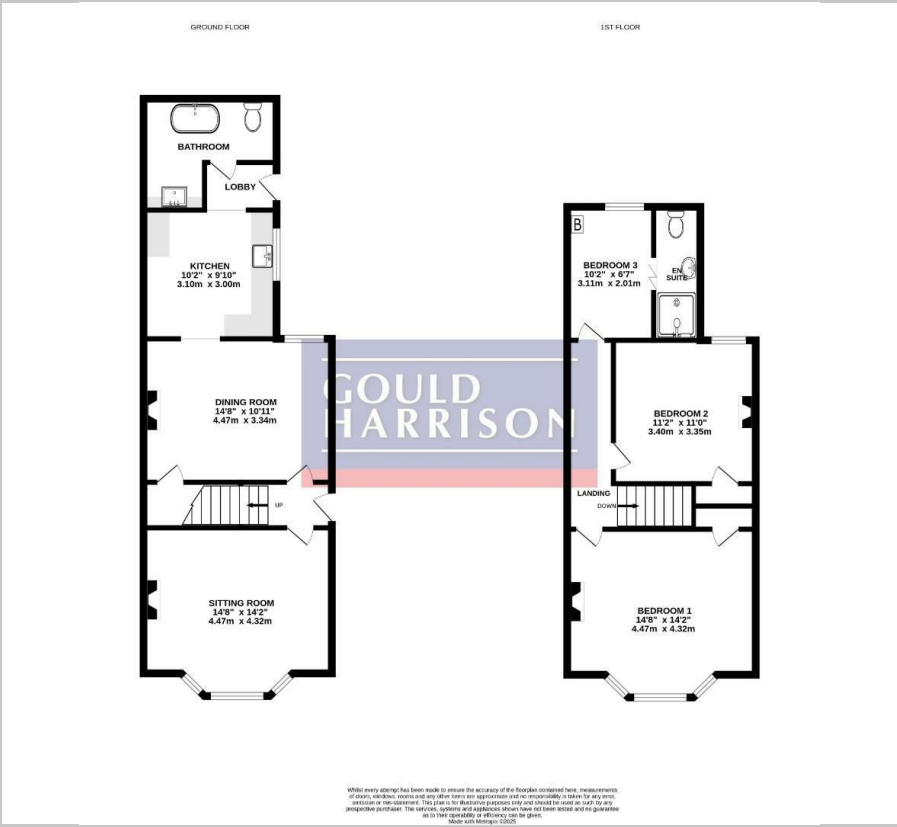
### Viewing

Please contact our Ashford Office on 01233 646411 if you wish to arrange a viewing appointment for this property or require further information.





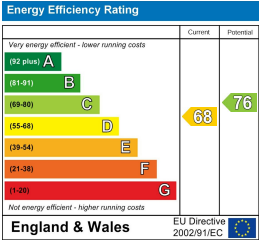
Floor Plan



Area Map



Energy Efficiency Graph



These particulars, whilst believed to be accurate are set out as a general outline only for guidance and do not constitute any part of an offer or contract. Intending purchasers should not rely on them as statements of representation of fact, but must satisfy themselves by inspection or otherwise as to their accuracy. No person in this firms employment has the authority to make or give any representation or warranty in respect of the property.